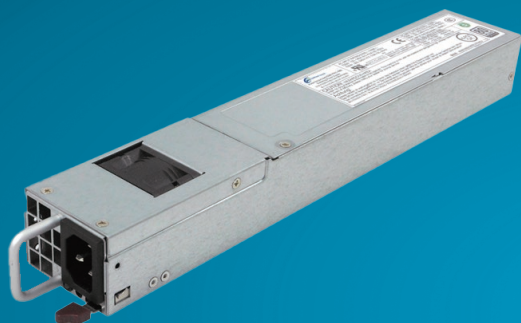


CDR-1221-4M1

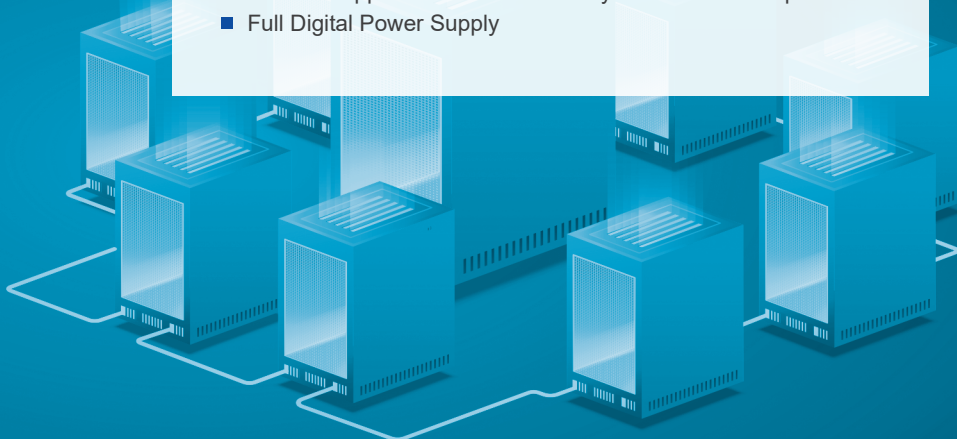
1200W Slim Power Supply AC/DC Dual-input Redundant

FEATURES

- High Efficiency: 96%
- Hot Swappable
- PMBus Support
- Full Digital Power Supply
- Smart Fan Speed Control
- Activate Power Factor Correction
- In-system Firmware Upload



■ Dimension : 322 x 54.5 x 40 mm (D x W x H)



SPECIFICATIONS

► INPUT

Voltage	AC input: 90 - 264Vac DC input: 180 - 300Vdc
Frequency	47 - 63Hz
Current	AC 100-127V / 12.5-8.5A AC 200-240V / 7.5-6.0A DC 240V / 6A

► EFFICIENCY, PFC, THD

Load (%)	Input 115Vac			Input 230Vac		
	Input current THD	Power Factor	Efficiency	Input current THD	Power Factor	Efficiency
10%	15%	0.9	86%	18%	0.9	90%
20%	10%	0.95	90%	10%	0.95	94%
50%	5%	0.98	94%	8%	0.96	96%
100%	5%	0.99	91%	5%	0.98	92%

► OUTPUT

Parameter	12V (100-127Vac)	12V (200-240Vac)	5Vsb
Max Load	83A	100A	4A
Regulation	±5%	±5%	±5%
Ripple & Noise	120mVp-p	120mVp-p	50mVp-p

► PROTECTION, RELIABILITY, WARRANTY

Over Current Protection (OCP)
Over Power Protection (OPP)
Over Voltage Protection (OVP)
Over Thermal Protection (OTP)
Short Circuit Protection (SCP)
Holdup Time: 12ms @ 75% Load
MTBF: >200,000 hours @ 25 °C
Warranty: 3 Years

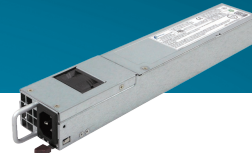
► ENVIRONMENTAL

Temperature	Operating : 0 to 50°C Non-operating : -40 to 70°C
Altitude	Operating : to 16,500 feet (5,000 meters) Non-operating : to 35,000 feet (10,580 meters)
Relative humidity	Operating : 5% to 90% RH, Non-condensing Storage : 5% to 95% RH, Non-condensing

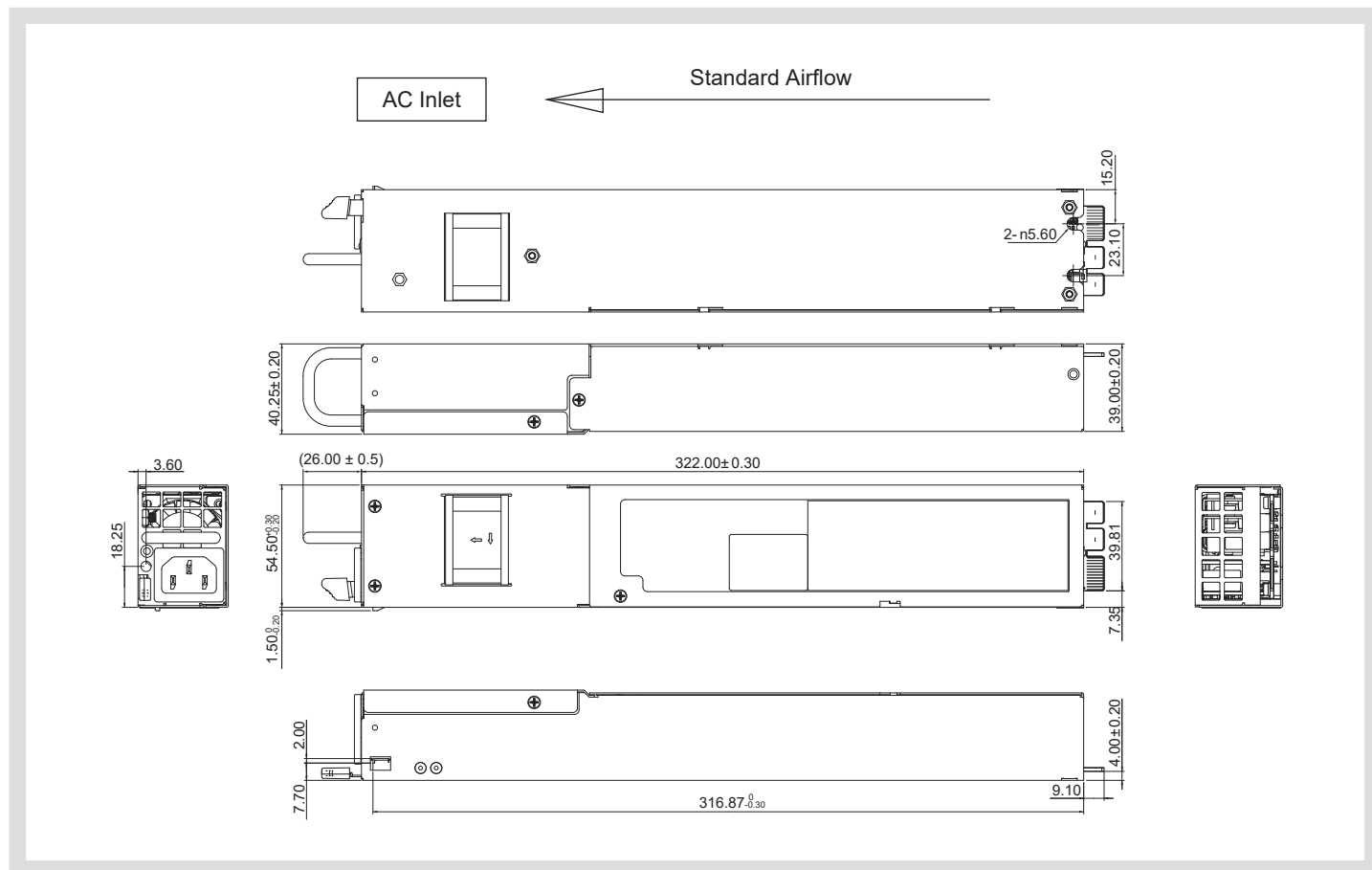
SAFTY AND COMPLIANCE

UL, cUL, CE, CQC, BSMI, CB, FCC class A, CISPR Class A, RoHS

CDR-1221-4M1



MECHANICAL DRAWING



CONNECTORS

AC Inlet IEC 320 C-14, 12A / 250Vac

DC Output Gold Finger

DC Output Mating Amphenol connector : GPCETR44042400213HR or ALLTOP

★ Product details and image are for reference and final product is subject to change without notice.

OUTPUT CONNECTOR PIN ASSIGNMENTS

Bottom		Top	
PIN#	Signal Name	PIN#	Signal Name
S1	+12VRS+	S13	Reserved
S2	+12VRS-	S14	Present
S3	12LS	S15	A0
S4	SMB Alert	S16	Reserved
S5	SDA	S17	Reserved
S6	SCL	S18	Reserved
S7	PS_Kill	S19	Reserved
S8	PS_On	S20	Reserved
S9	PW_OK	S21	Wake up_Bus
S10	A1	S22	Reserved
S11	5V Standby	S23	5V Standby
S12	5V Standby	S24	5V Standby
P1	+12V	P3	GND
P2	+12V	P4	GND



Compuware Technology Inc.

Tel: 886-2-8226-3936 Address: 5F., No. 232, Liancheng Rd., Zhonghe Dist., New Taipei City 235, Taiwan (R.O.C.)



www.compuware-us.com